



Hayter Road, Brixton, SW2

5 bedroom house for sale

£1,250,000

Freehold

Property Details

This impressive detached family home has 2,500 square feet of internal living space, with the opportunity to add value over time and not pay a premium for someone else's taste in décor. The ground floor comprises double reception rooms at the front, a smaller room adjacent that would be ideal as a home office or a cloakroom and a large open-plan living space at the rear. The kitchen is generous, offering space-saving integrated appliances, an abundance of storage and modern finishes. There is enough room for a large dining table as well as a cosy reception area nestled towards the end of the room, opening out onto a lovely private garden. Arranged over the first and second floors of this characterful house, four very comfortable double bedrooms and two bathrooms. Each room is attractive in its own right, high ceilings and large sash windows supplement the spacious, airy feel throughout whilst flooding the rooms with natural light. The larger, family style bathroom provides access to an impressive roof terrace. Having access to private outside space is more important than ever and this secluded garden will appeal to a wide range of purchasers. The top floor of the property truly is the icing on the cake. Currently occupied as a reception room, this grand space would be the ideal principal bedroom, an abundant room with multiple windows and a truly tranquil feel where one can relax and unwind. This final room is further complimented by an en-suite bathroom.

Council tax band F

EPC rating E (52)

Features

- Five double bedrooms
- Three Bathrooms
- Detached Victorian townhouse
- Three reception rooms
- Almost 2500 square feet of internal space
- A private secluded garden
- Stamp your own mark on this attractive pocket of Brixton
- 5-7 minutes by foot to the heart of Brixton
- A short stroll to Brockwell Park
- Freehold and chain-free





Hayter Road, Brixton, SW2

K

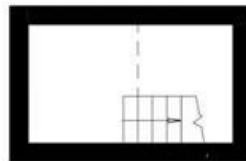
5 Bedroom House

Approx internal area:

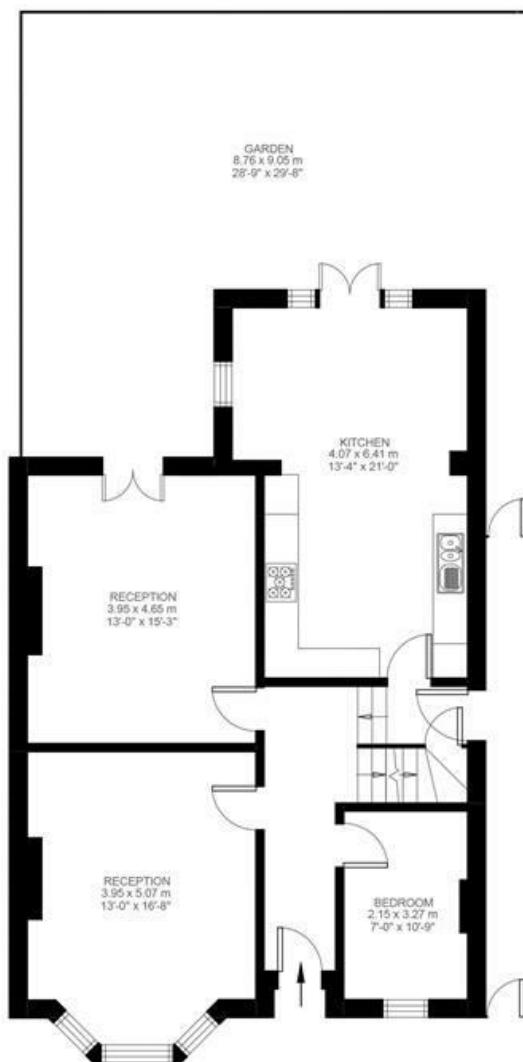
2494 sqft 232 sqm

(EXCLUDING EAVES STORAGE)
EAVES STORAGE 6.62 SQ.M / 71 SQ.FT
INCLUSIVE TOTAL AREA 238.62 SQ.M / 2568 SQ.FT

While we do try our very best,
floor plans are produced as a
guide only and we take no
responsibility for the precise
accuracy with which any
property is represented



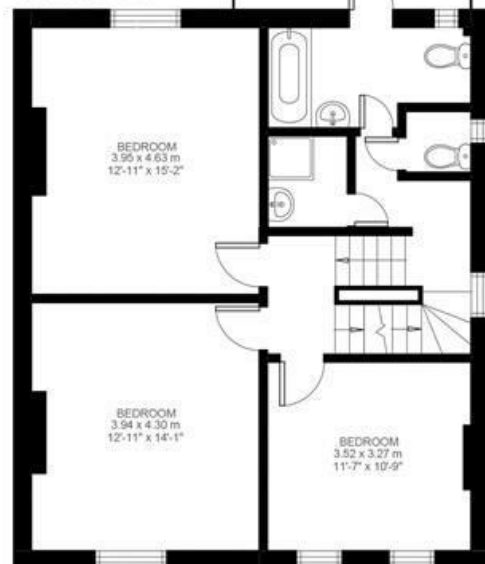
Basement



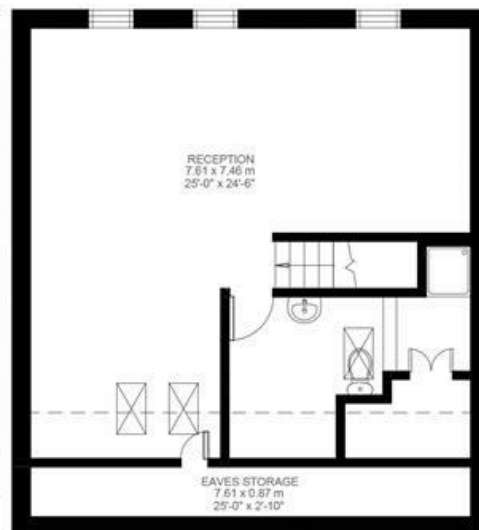
Ground Floor



Second Floor



First Floor



Third Floor



Hayter Road, Brixton, SW2

